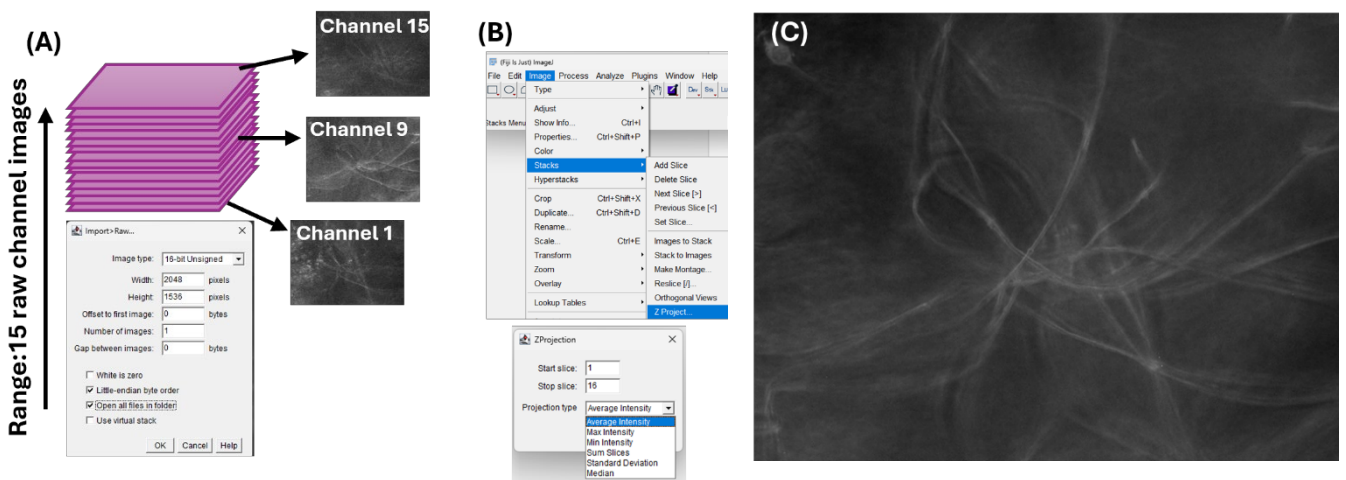


## A Quick Start Guide to Opening and Applying LUTs in Fiji

Fiji is a free, open-source platform for scientific image analysis that offers a user-friendly interface for efficient image processing. HalolImages can be opened in Fiji to generate rapid 2D visualizations for quick assessment. By default, these images are displayed in grayscale; however, applying Look-Up Tables (LUTs) can enhance contrast and emphasize structural features—all without altering the original image data.

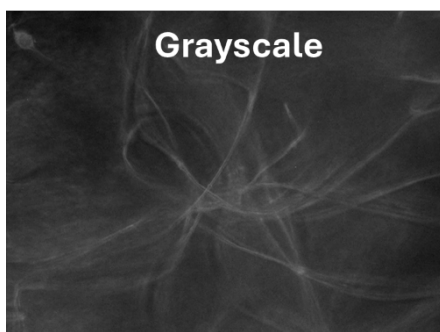
### Generating 2D representation from the 15 channel (raw) images in Fiji



(A) shows a representation of 15 raw HalolImages in a Z-stack, along with the corresponding settings for opening the images in Fiji. (B) shows the workflow to create a Z projection (2D representation) that combines the 15 HalolImages. (C) shows a 2D representation of 15 HalolImages generated from a *fibre sample* using HaloElement, projected based on average intensity.

### Changing Look-Up Table:

Navigate to: *Image > Lookup Tables*



HalolImage displayed in grayscale.  
No LUT applied.



HalolImage displayed with the  
"Magenta Hot" LUT applied in Fiji.



HalolImage displayed with the "Cyan  
Hot" LUT applied in Fiji.